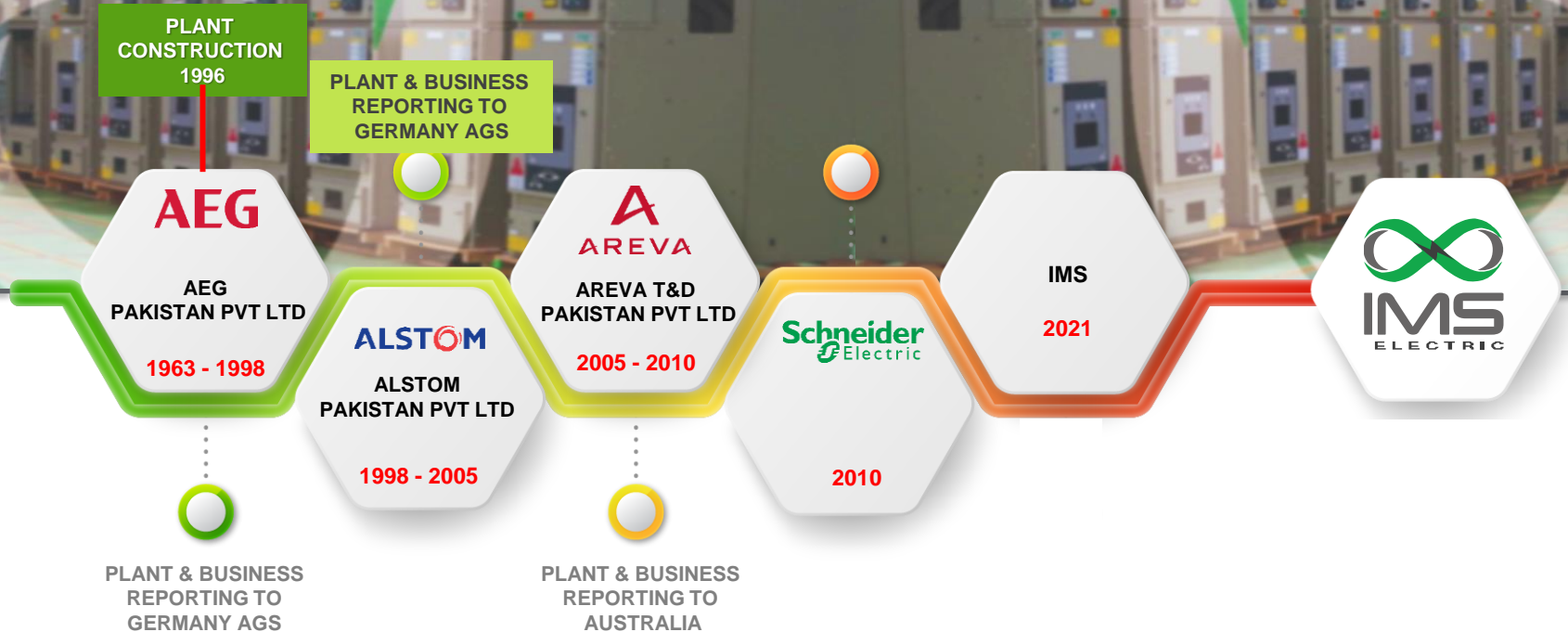




## POWER SYSTEMS

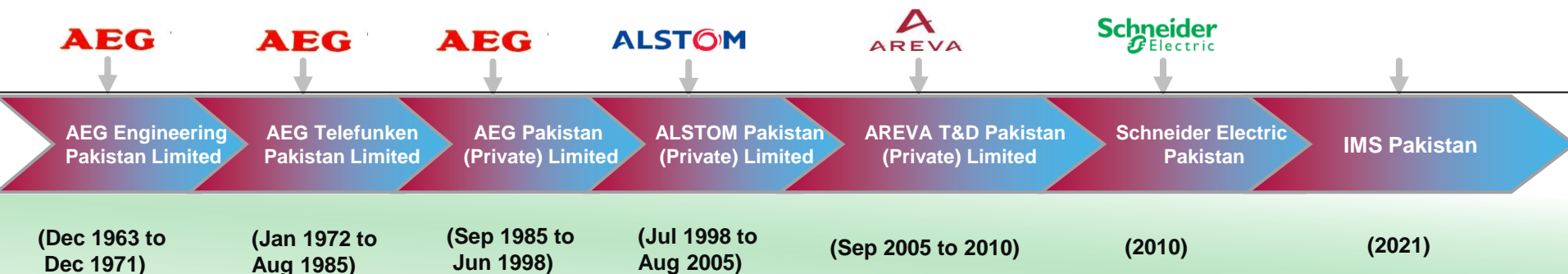
[www.ims-electric.com](http://www.ims-electric.com)

FOR MORE THAN 35 YEARS, SCHNEIDER ELECTRIC & ITS LEGACY CONTINUES TO SERVE THE PAKISTAN MARKET BY PROVIDING INTEGRATED SOLUTIONS IN SAFE ENERGY MANAGEMENT, RELIABLE, EFFICIENT, PRODUCTIVE AND GREEN.



# Historical Information

## Change of Legal Name:



Current Legal Name	:	IMS Electric Formerly Schneider Electric Pakistan
Date of incorporation	:	20.12.1963
Commercial Registrar No.	:	K-01527 Karachi
Legal Form	:	Private Limited Company
Fiscal Year End	:	31st December

EcoStruxure™ Architecture



Connected devices, real-time control & open software, analytics & services

# Portfolio



- Designing and manufacturing of Medium Voltage Switchboards 17.5kV, 95 kV BIL, 2500A, 40 kA types PIX, WKK, RK
- Designing and manufacturing of Low Voltage withdrawable and fixed type Motor Control Centers, Distribution Switchboards and Power Distribution Panels Types Blokset D,Mf,Ms,Mw2
- Designing and manufacturing of Relay Protection and Control Panels for Grid Stations, AC/DC Panels
- Designing and manufacturing of Kiosks complete with MV, trafo and LV sections for outdoor use
- Projects encompassing all requirements for a Distribution System of industrial and infrastructure Projects
- Service of HV, MV Systems including operation and maintenance and spares



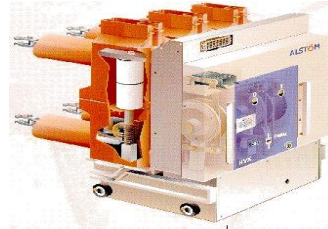


## TECHNICAL SPECIFICATIONS

- Rated voltage: upto 17.5 kV
- Rated current: upto 4000A
- BIL upto 95 kV
- Short Circuit: 40 kA
- Dim (mm ):  
H: 2130 mm, D: 1405  
W: 650 – 1000 mm

## FEATURES

- KEMA tested
- Indoor type
- Metalclad
- Internal withdrawability
- Robust construction
- Zinc coated sheets
- Internal arc withstand
- Back to wall mounting
- Digital control and protection
- All operation with doors or covers closed
- Earthing-switch with making capacity, visible position
- All the mechanical interlocking according to IEC standards



### ***Type PIX***

### ***Medium Voltage Switchgear Metalclad upto 17.5 kV***



# TECHNICAL SPECIFICATION

Rated Current:

Main Horizontal Busbar: upto 6300A

Vertical Busbar: upto 3200A

Fault level rating of Busbar:

Rated short time current: upto 100 kA for 1Sec

Standards: IEC 60439-1

- Protection class of Enclosure IP 20 / 31 / 42 / 54
- Forms 1 / 2b / 3b / 4
- Seismic / Earthquake resistance UBC/CBC, zone 4, floor & roof
- Internal arc withstand IEC 61641 – 85 KA /0.3 s and AS 3439-1, 85 KA
- Dim: (mm) Width 500, 700, 900,1200 Height 2200

## FEATURES

- Fully compartmentalized Design (up to form 4 )
- Fixed, Plug-in and Withdrawable arrangement
- Ease in replacement of draw out units
- Interchangeability of similar rated draw out units
- Cable termination access from front and rear
- Ensures safety and protection to operating personnel
- High protection against chemically aggressive environments



## ***Type Blokset***



### **Blokset**

**High dependability**

**low voltage switchboards**



# Ring Main Unit

RM6 (China & France)



## Combinations:

Load break switch  
Fuse type  
SF6 Breaker (200 A, 630 A)  
Mechanical Endurance: M1

FBX (China)



## Combinations:

Load break switch  
Fuse type  
Vacuum Breaker (200 A, 630 A)  
Mechanical endurance: M2

	12 kV	
	FBX	RM6
In	630 A	630 A
Ik	25 kA	25 kA
IAC	25 kA 1s	20 kA 1s

	17 kV	
	FBX	RM6
In	630 A	630 A
Ik	21 kA	21 kA
IAC	21 kA 1s	20 kA 1s

	24 kV	
	FBX	RM6
In	630 A	630 A
Ik	20 kA	20 kA
IAC	20 kA 1s	20 kA 1s



# Dry Type Transformers

- Option for Copper/ Aluminum windings
- Air Natural (AN)
- Air Forced (AF) to increase rated power by up to 40%
- 15-20% expensive than conventional Oil Type
- Saving costs on civil works, oil drainage pipe and pits to compensate initial cost
- Maintenance free
- Environment friendly
- Ratings: 500kVA – 3500kVA
- COO: France & China



# EcoStruxure Substation Operations

Architecture built on Ease of Use, Engineering & Integration



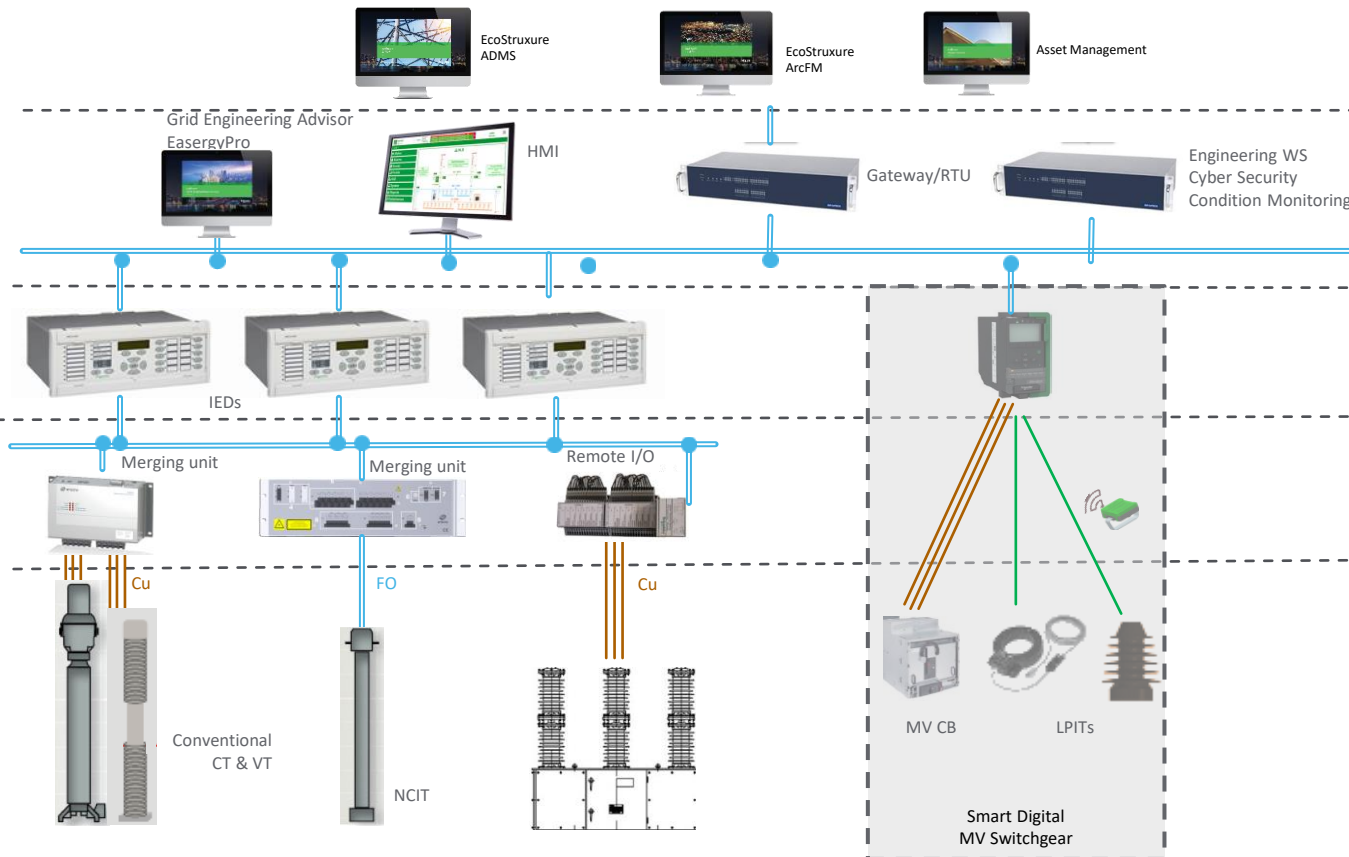
Enterprise

Station

Bay

Process

Field



## Safety & Security

People safety  
Resilience - Compliance

## Efficiency

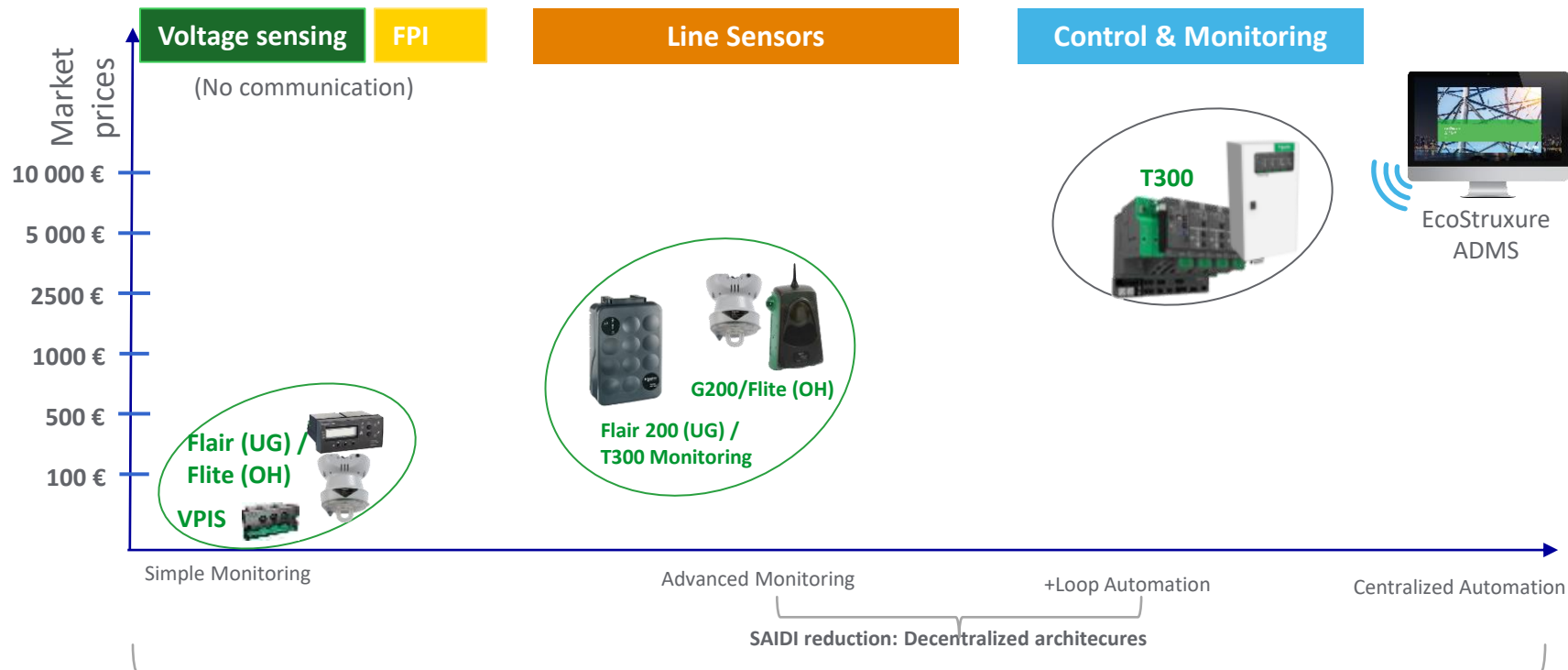
Reduced TCO  
Operational Efficiency

## Reliability

Availability  
Quality of Supply

# Feeder Automation Components

Building blocks from Centralized to Decentralized Solutions



End-End IOT integration with ADMS drives centralized reliability & efficiency solution

# TECHNICAL SPECIFICATION

- Protection Class Of Enclosure IP42 (up to IP54 on request)
- Dim: (mm) As per Customer Requirements (Customized Solution)
- BIL: upto 95 kV

## FEATURES

- Outdoor Transformer Kiosk substation With Segregated Transformer, MV and LV Compartments.

## Outdoor KIOSKS



# Deploy Customized Solutions for Every Segment



## Oil & Gas

- Smart O&G field solutions
- E-House
- Energy management & control systems
- Pipeline management
- Motor management
- Downstream apps
- Services
- Integrated security



## Electro-sensitive

- Turnkey electrical systems
- Power quality management
- Microgrids
- Energy management
- Advanced services
- Security of people & assets
- Solutions for healthcare
- Solutions for data centers

## Electrical Utilities

- Renewable integration
- Weather forecasting
- Network management
- Smart metering
- Demand response
- Smart Generation
- Micro Grids, Storage
- Virtual power plants
- Advanced applications
- Asset management



## Electro-intensive

- Solution for Commercial & Industrial buildings
- Turnkey electrical systems
- Mobile substations
- E-House
- Explosion proof system
- Compensation and filtering systems
- Energy management
- Advanced services
- Security of people & assets
- Solution for Mining





# Getz Astola Project



## > Scope

Supply, Installation, testing and commissioning of MV Panels, LV Panels, DB's, Dry type transformers, BTB, VFD's, Power Supply System, Energy analysis & monitoring, Cabling, Earthing, and Operation & Maintenance.

➤ Owner	Getz Pharma
> Project type	Substations Electrical Works
> Site	Karachi
➤ Segment	Pharmaceuticals/Industry
> Year	2017

# FFBL BIN QASIM



## > Scope

Supply, Installation, testing and commissioning of  
MV Panels, LV Panels, DB's, Dry type  
transformers, Cabling & Cable Trays



> Owner	Fauji Fertilizers
➤ Project type	CPP Admin Block
> Site	Karachi
➤ Segment	Chemicals/Industry
> Year	2017

# SNGPL ePLMS SCADA Project



## > Scope

SE Telvent and SEPK have participated in the bid mutually, SE Telvent quoted complete software part along with complete engineering of project, they provided the quote on cost+6% and also provided the BOQ required to run the system whereas SEPK scope of work consist of complete hardware required in the project, SEPK procured the same and installed and configured it in the field.



> Owner	SNGPL
> Project type	Replacement and expansion of SCADA system on existing transmission network
> Site	Punjab
➤ Segment	Oil & Gas
> Year	2017

# CHEVRON TERMINAL



## > Scope

Supply, Installation, testing and commissioning of MV Panels, LV Panels, Generators, transformers, Earthing , Cable Tray, Power cables and Instrumentation.



> Owner	Chevron Pakistan
> Project type	Complete Electrification Work
> Site	Karachi
➤ Segment	Oil & Gas
> Year	2016

# Packages Mall



## > Scope

Supply, Installation, testing and commissioning of MV Panels, LV Panels, DB's, Dry type transformers, BT, RMU, VFD's, Conditioned Power Supply System, Energy analysis & monitoring, Earthing, and Operation & Maintenance.



> Owner	Packages Pvt. Ltd.
➤ Project type	Substations
> Site	Lahore
➤ Segment	Building
> Year	2015



# Nishat Emporium Mall

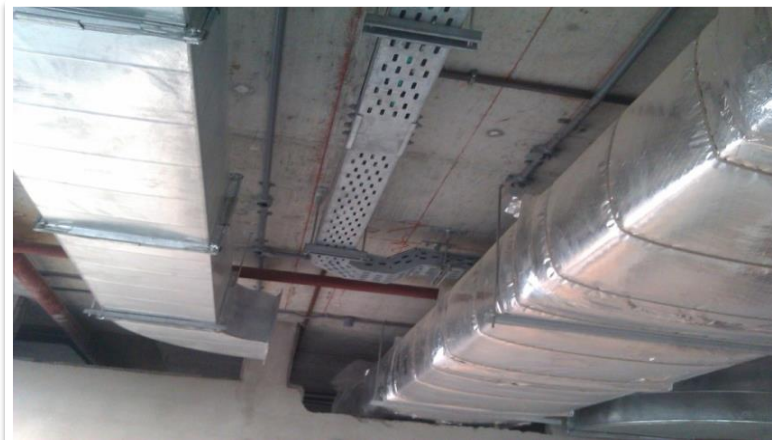


## > Scope

Supply, Installation, testing and commissioning of MV Panels, LV Panels, DB's, Dry type transformers, BTD, RMU, VFD's, Conditioned Power Supply System, Energy analysis & monitoring, Earthing, and Operation & Maintenance.

- |                |   |
|----------------|---|
| > Owner        | Nishat Group                            |
| > Project type | Substations & Basement Electrical Works |
| > Site         | Lahore                                  |
| ➤ Segment      | Building                                |
| > Year         | 2015                                    |

# MCB IT Tower



## > Scope

Supply, Installation, testing and commissioning of MV Panels, LV Panels, DBs, transformers, Light Fixtures, Fire Alarm system, Point wiring, Earthing & Lighting protection, Cable Tray, Lighting Control system, Public Address system and Power cables

> Owner	MCB
> Project type	Complete Electrification Work
> Site	Lahore
➤ Segment	Building
> Year	2013

# EPRF II Refinery



## > Scope

Supply, Installation, testing and commissioning of MV Panels, LV Panels, Generators, transformers, Explosion proof lighting, Earthing , Cable Tray, Power cables and Instrumentation.



> Owner	EPRF
> Project type	Complete Electrification Work
> Site	Karachi
➤ Segment	Oil & Gas
> Year	2012

# Dolmen City



## > Scope

Supply, Installation, testing and commissioning of MV Panels, LV Panels, Dry type transformers, Earthing, Cable Tray and Power cables.

> Owner	Dolmen Group
> Project type	Electrification Works
> Site	Clifton, Karachi
➤ Segment	Building
> Year	2011

# Our Clientele







## POWER SYSTEMS

[www.ims-electric.com](http://www.ims-electric.com)

